

SPARE PARTS SECTION

Shrinker Stretcher

Model. SHST2.0HD

Order Code S2268

Edition No : SHST2.0HD-2

Date of Issue : 08/2020

The following section covers the spare parts diagrams and lists that were current at the time this manual was originally printed. Due to continuous improvements of the machine, changes may be made at any time without notification.

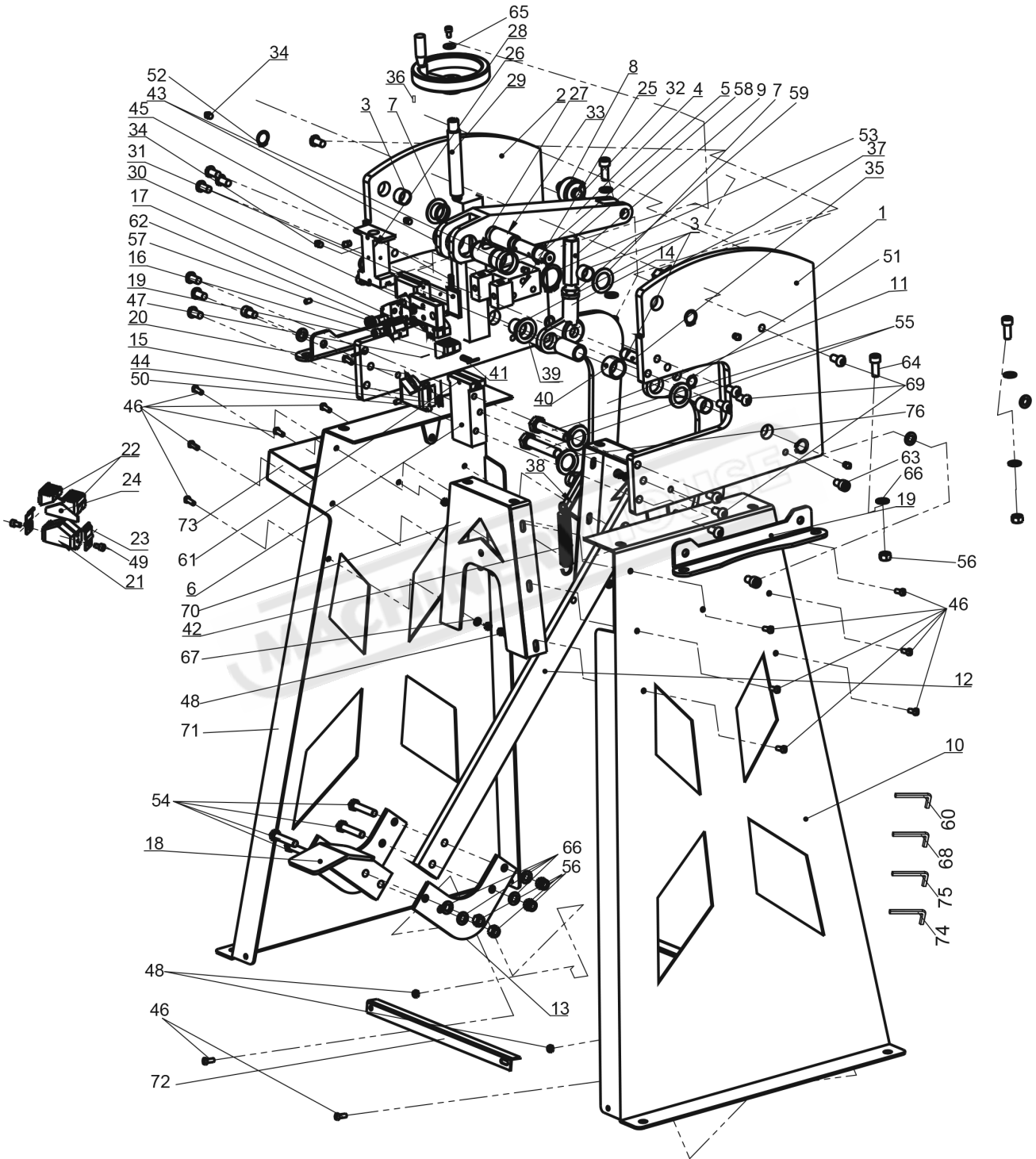
HOW TO ORDER SPARE PARTS

1. Have your machines **model number, serial number & date of manufacture** on hand, these can be found on the specification plate mounted on the machine
2. A scanned copy of your parts list/diagram with required spare part/s identified
3. Go to www.machineryhouse.com.au/contactus and fill out the inquiry form attaching a copy of scanned parts list.

CONTENTS

Spare Parts Diagram.....	16
Spare Parts List.....	17

SPARE PARTS DIAGRAM



SPARE PARTS LIST

ITEM	DESCRIPTION	QTY.	ITEM	DESCRIPTION	QTY.
1	Right Side Plate	1	39	Washer 4mm	2
2	Left Side Plate	1	40	Bushing	1
3	Copper Bushing	4	41	Spring	4
4	Driving Arm	1	42	Spring	1
5	Shaft 20mm	2	43	Copper Bushing	2
6	Fixed Seat	1	44	Spring	4
7	Washer	2	45	Spring	2
8	Fish-Eye Joint Bearing	1	46	Screw M6X16	18
9	Hexagonal Screw	1	47	Pin	4
10	Side Plate	1	48	Nut M6	17
11	C-Plate	2	49	Screw M6x10	4
12	Rod	1	50	Screw M4X12	4
13	L-Plate	2	51	C-ring 16mm	2
14	Fish-Eye Joint Bearing	1	52	C-ring 20mm	4
15	V-Block	2	53	C-ring 32mm	2
16	Big Shrinker Jaw	2	54	Bolt M10X40	4
17	Small Shrinker Jaw	2	55	Bolt M16X65	2
18	Footplate	1	56	Nut M10	8
19	Angle Plate	2	57	Nut M8	2
20	Plate	2	58	Nut M16	3
21	Stretcher V-Block	2	59	Nut M16	1
22	Stretcher Jaw	4	60	Hex Key Wrench 4mm	1
23	Spring Plate	4	61	Screw M6X12	2
24	Sliding Plate	2	62	Screw M8x20	2
25	Slotted Block	1	63	Screw M10x20	4
26	Block With Slot	1	64	Screw M10x25	4
27	Seat	1	65	Big Washer 6mm	1
28	Hand Wheel	1	66	Washer 10mm	16
29	Screw	1	67	Washer 6mm	17
30	Pressure Plate	1	68	Hex Key Wrench 4mm	1
31	Copper Plate	1	69	Screw M10X25	16
32	Pin	1	70	Connection plate	2
33	Copper Bushing	2	71	Side Plate(With Hook)	1
34	Oil Cup	7	72	Strengthening rod	2
35	Shaft 16mm	1	73	Tool Box	1
36	Key 5mm	1	74	Hex Key Wrench 3mm	1
37	Nut M10	1	75	Hex Key Wrench 4mm	1
38	Washer	2	76	Washer 16mm	4